

Biomes of Southern Africa



2026

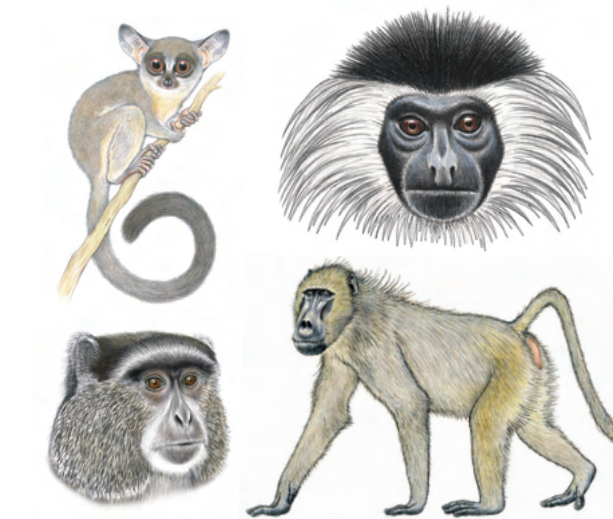


Printed by Modern Lithographic (P) Ltd Nairobi, Kenya

Primates of Southern Africa Pocket Identification Guide

re:wild
TROPICAL POCKET GUIDE SERIES
Primates of Southern Africa

Pocket Identification Guide



Thomas M. Butynski & Yvonne A. de Jong

Series Editors
Russell A. Mittermeier & Anthony B. Rylands

Illustrations & Design
Stephen D. Nash

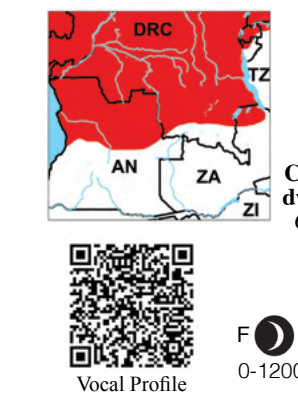


Thomas's dwarf galago
Galagoides thomasi

LC

F A,O
0-1400m

Vocal Profile



Congo Basin dwarf galago
Galagoides demidoff phasma

NA

F A,O
0-1200m

Vocal Profile



Angola dwarf galago
Galagoides kumbirensis

NT

F A,O
280-910m

Vocal Profile



Namibia lesser galago
Galago moholi bradfieldi

NA

W A,O
0-1400m

Vocal Profile



Mozambique dwarf galago
Paragalago granti

LC

W A,O
0-1670m

Vocal Profile



Moholi lesser galago
Galago moholi moholi

NA

W A,O
0-1500m

Vocal Profile



Miombo silver large-eared greater galago
Otolemur crassicaudatus monteiri

LC

F,W A,O
0-1200m

Vocal Profile



Southern large-eared greater galago
Otolemur crassicaudatus crassicaudatus

LC

F,W A,O
0-1500m

Vocal Profile

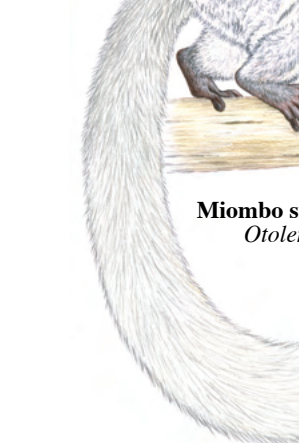


Mozambique large-eared greater galago
Otolemur crassicaudatus kirkii

LC

F,W A,O
0-1000m

Vocal Profile



Pangani small-eared greater galago
Otolemur garnettii panganiensis

LC

F,W A,O
0-540m

Vocal Profile



Central potto
Perodicticus edwardsi

LC

F A,O
0-1200m

Vocal Profile



Pluto monkey
Cercopithecus mitis mitis

VU

F A,O
0-910m

Vocal Profile



Mweru monkey
Cercopithecus mitis opisthicticus

LC

F A,O
770-1800m

Vocal Profile



Stair's white-collared monkey
Cercopithecus mitis erytharchus

LC

F A,O
0-1800m

Vocal Profile



Red-eared white-collared monkey
Cercopithecus mitis francescae

NA

F A,O
480-1500m

Vocal Profile



Red-tailed moustached monkey
Cercopithecus cephus cephus

VU

F A,O
0-2550m

Vocal Profile



Samango monkey
Cercopithecus mitis labiatus

NT

F A,O
0-200m

Vocal Profile



Red-tailed moustached monkey
Cercopithecus cephus cephus

VU

F A,O
0-2550m

Vocal Profile



Samango monkey
Cercopithecus mitis labiatus

NT

F A,O
0-200m

Vocal Profile



Samango monkey
Cercopithecus mitis labiatus

NT

F A,O
0-200m

Vocal Profile



Samango monkey
Cercopithecus mitis labiatus

NT

F A,O
0-200m

Vocal Profile



Samango monkey
Cercopithecus mitis labiatus

NT

F A,O
0-200m

Vocal Profile



Samango monkey
Cercopithecus mitis labiatus

NT

F A,O
0-200m

Vocal Profile



Samango monkey
Cercopithecus mitis labiatus

NT

F A,O
0-200m

Vocal Profile

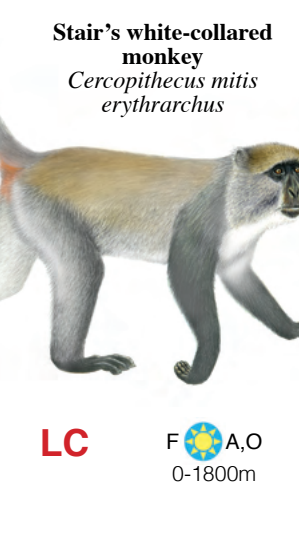


Samango monkey
Cercopithecus mitis labiatus

NT

F A,O
0-200m

Vocal Profile



Samango monkey
Cercopithecus mitis labiatus

NT

F A,O
0-200m

Vocal Profile



Samango monkey
Cercopithecus mitis labiatus

NT

F A,O
0-200m

Vocal Profile

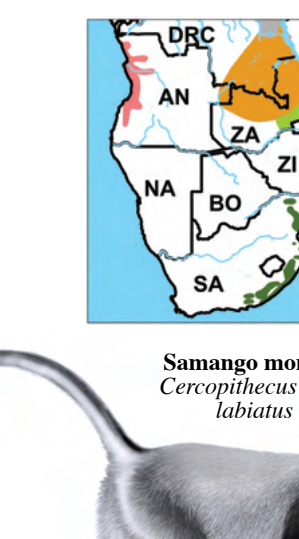


Samango monkey
Cercopithecus mitis labiatus

NT

F A,O
0-200m

Vocal Profile



Samango monkey
Cercopithecus mitis labiatus

NT

F A,O
0-200m

Vocal Profile

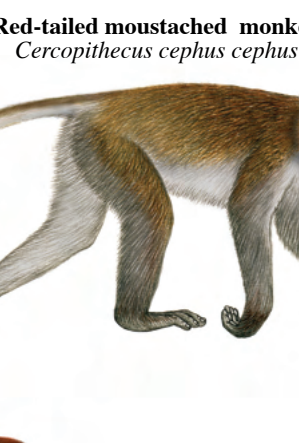


Samango monkey
Cercopithecus mitis labiatus

NT

F A,O
0-200m

Vocal Profile



Samango monkey
Cercopithecus mitis labiatus

NT

F A,O
0-200m

Vocal Profile

Checklist and Conservation Status of Southern African Primates

Key to status in IUCN Red List: LC, Least Concern; NT, Near Threatened; VU, Vulnerable; EN, Endangered; CR, Critically Endangered; NA, Not Assessed; DD, Data Deficient

Common name and scientific name	Red List status	Date observed	Locality observed
Thomas's dwarf galago <i>Galagoides thomasi</i>	LC		
Congo Basin dwarf galago <i>Galagoides demidoff phasma</i>	NA		
Angola dwarf galago <i>Galagoides kumbirensis</i>	NT		
Mozambique dwarf galago <i>Paragalago granti</i>	LC		
Moholi lesser galago <i>Galago moholi moholi</i>	NA		
Namibia lesser galago <i>Galago moholi bradfieldi</i>	NA		
Southern large-eared greater galago <i>Otolemur crassicaudatus crassicaudatus</i>	LC		
Miombo silver large-eared greater galago <i>Otolemur crassicaudatus monteiri</i>	LC		
Mozambique large-eared greater galago <i>Otolemur crassicaudatus kirkii</i>	LC		
Pangani small-eared greater galago <i>Otolemur garnettii panganiensis</i>	LC		
Central potto <i>Perodicticus edwardsi</i>	LC		
Tanzania Sykes's monkey <i>Cercopithecus mitis monoides</i>	LC		
Pluto monkey <i>Cercopithecus mitis mitis</i>	VU		
Moloney's monkey <i>Cercopithecus mitis moloneyi</i>	LC		
Mweru monkey <i>Cercopithecus mitis opisthoticus</i>	LC		
Stair's white-collared monkey <i>Cercopithecus mitis erythrarchus</i>	LC		
Red-eared white-collared monkey <i>Cercopithecus mitis francescae</i>	NA		
Samango monkey <i>Cercopithecus mitis labiatus</i>	VU		
Red-tailed moustached monkey <i>Cercopithecus cephus cephus</i>	NT		
Black-nosed red-tailed monkey <i>Cercopithecus ascanius atrinanus</i>	DD		
Katanga red-tailed monkey <i>Cercopithecus ascanius katangae</i>	LC		
Black-cheeked red-tailed monkey <i>Cercopithecus ascanius ascanius</i>	LC		
Schmid's red-tailed monkey <i>Cercopithecus ascanius schmidti</i>	LC		
De Brazza's monkey <i>Cercopithecus neglectus</i>	LC		
Malbrouk monkey <i>Chlorocebus cynosuroides</i>	LC		
Reddish-green vervet <i>Chlorocebus pygerythrus rufoviridis</i>	LC		
Southern vervet <i>Chlorocebus pygerythrus pygerythrus</i>	LC		
Southern talapoin monkey <i>Miopithecus talapoin</i>	VU		
Southern black mangabey <i>Lophocebus opdenboschi</i>	VU		
Southern yellow baboon <i>Papio cynocephalus cynocephalus</i>	LC		
Kinda baboon <i>Papio kindae</i>	LC		
Namibian chacma baboon <i>Papio ursinus ruacana</i>	LC		
Southern chacma baboon <i>Papio ursinus ursinus</i>	LC		
Sharpe's Angola colobus monkey <i>Colobus angolensis sharpei</i>	VU		
Slater's Angola colobus monkey <i>Colobus angolensis angolensis</i>	VU		

Key to symbols and abbreviations accompanying the illustration:
 Typical habitat: F Forest, W Woodland, bushland and savanna (including rivers and gallery forest).
 Diurnal animal (sun icon), Nocturnal animal (moon icon).
 Arboreality: A Arboreal, usually in trees; S Semi-terrestrial, on the ground and in trees; O Omnivore.
 Diet: Fo Folivore, O Omnivore.
 Altitude range in southern Africa: m (meters above sea level).

FOR MORE INFORMATION:

Please report confirmed sightings or errors to: yvonne@wildsolutions.nl

wildsolutions.nl

IPS Policy Statements & Guidelines

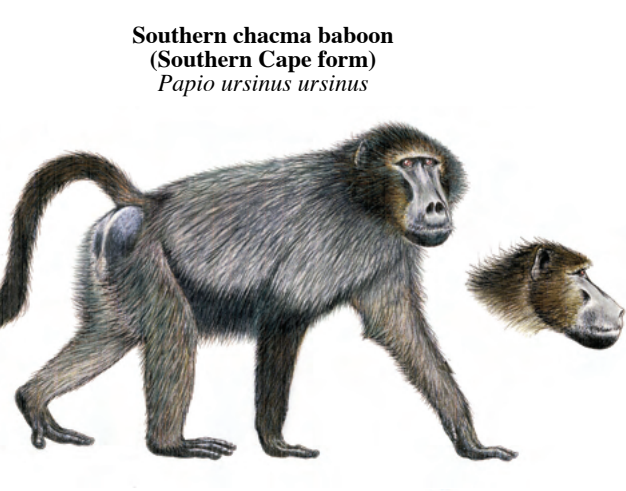
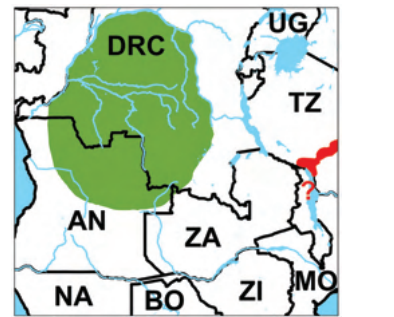
IUCN SSC Primate Specialist Group

Re:wild



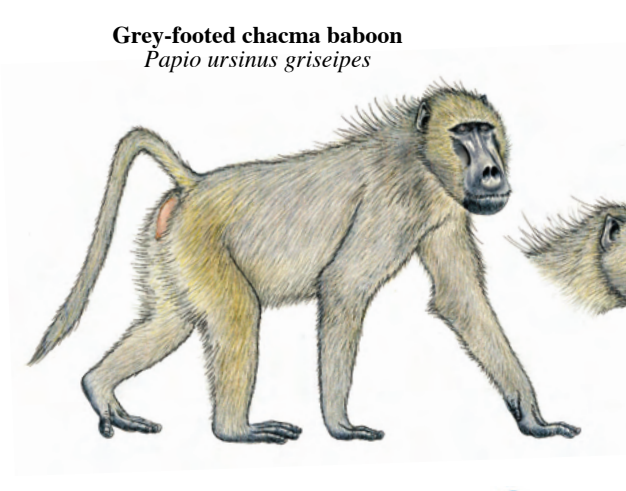
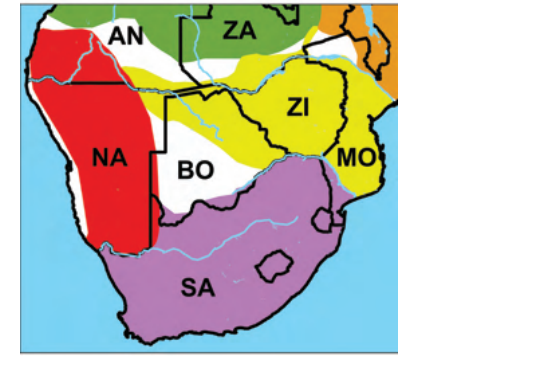
Slater's Angola colobus monkey
Colobus angolensis angolensis

VU F A, Fo 800-1200m



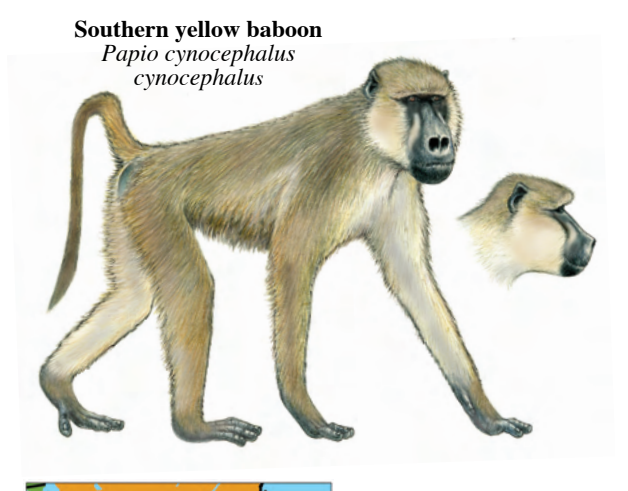
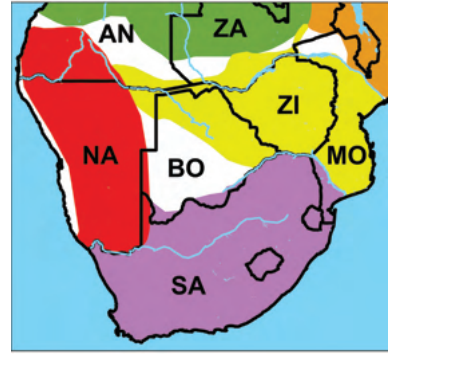
Southern chacma baboon (Southern Cape form)
Papio ursinus ursinus

LC W S, O 0-3000m



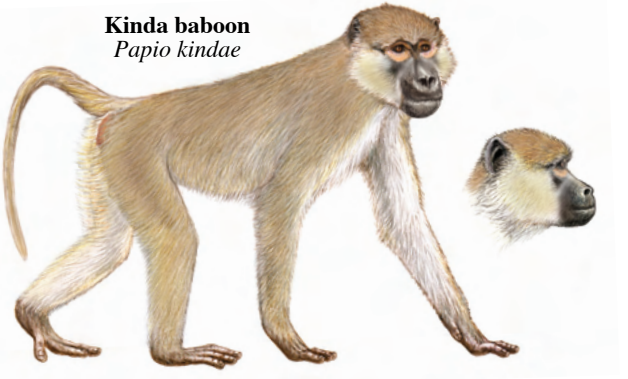
Grey-footed chacma baboon
Papio ursinus griseipes

LC W S, O 0-1300m



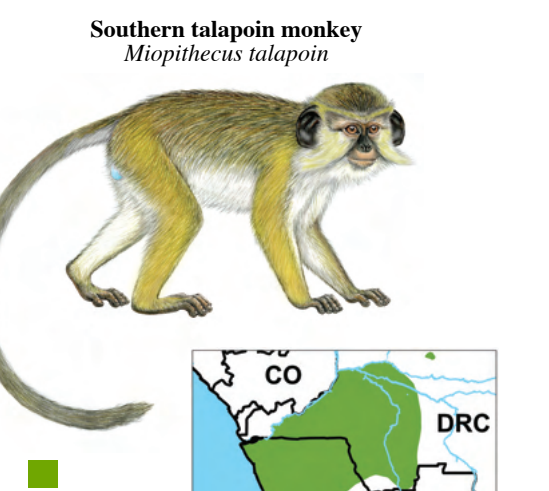
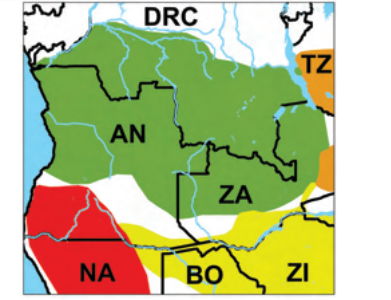
Southern yellow baboon
Papio cynocephalus cynocephalus

LC W S, O 0-1900m



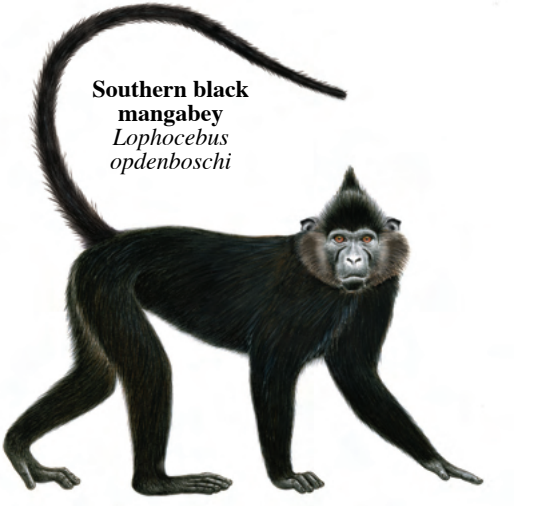
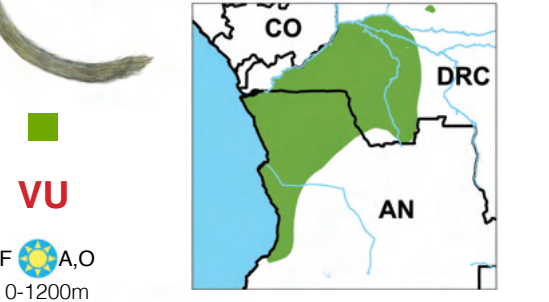
Kinda baboon
Papio kindae

LC W S, O 0-1800m



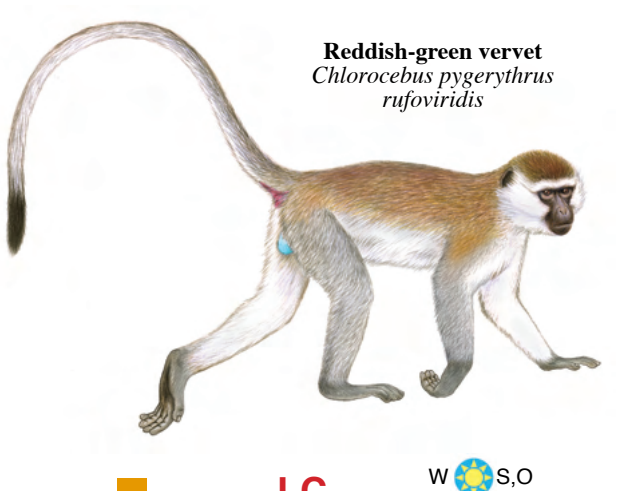
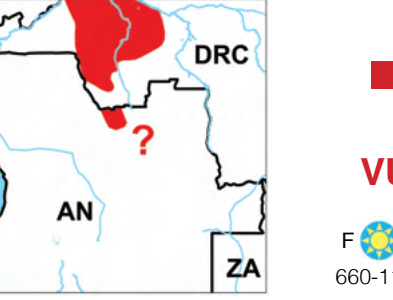
Southern talapoin monkey
Miopithecus talapoin

VU F A, O 0-1200m



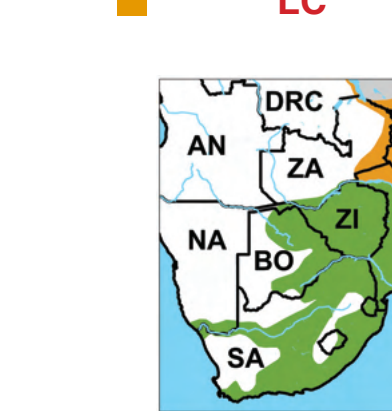
Southern black mangabey
Lophocebus opdenboschi

VU F A, O 660-1180m



Reddish-green vervet
Chlorocebus pygerythrus rufoviridis

LC W S, O 0-1450m



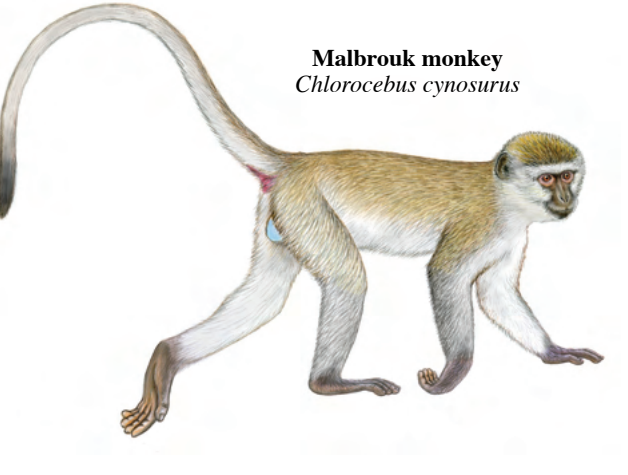
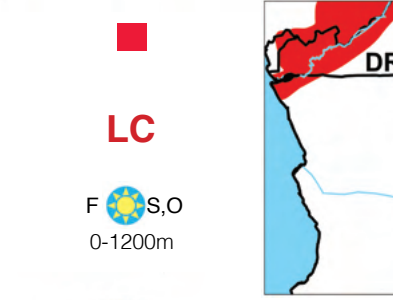
Southern vervet
Chlorocebus pygerythrus pygerythrus

LC W S, O 0-1525m



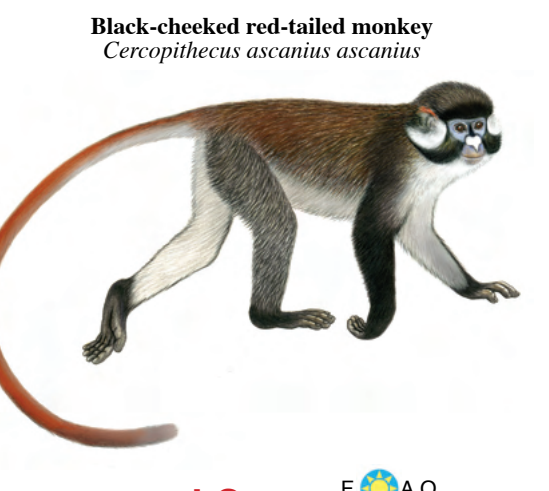
De Brazza's monkey
Cercopithecus neglectus

LC F S, O 0-1200m



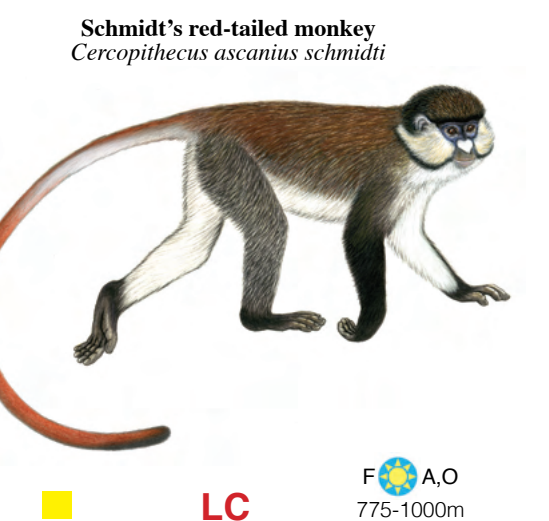
Malbrouk monkey
Chlorocebus cynosuroides

LC W S, O 0-1850m



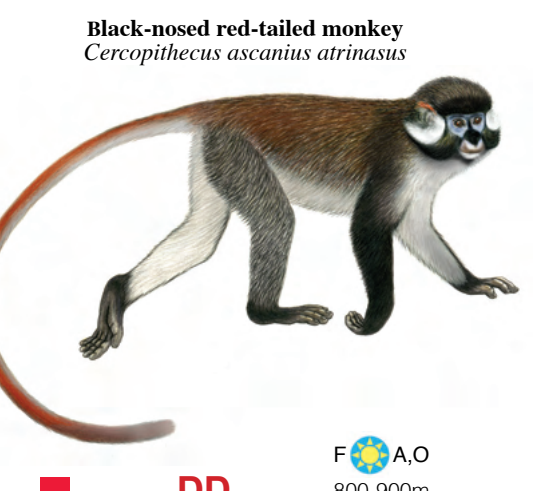
Black-cheeked red-tailed monkey
Cercopithecus ascanius ascanius

LC F A, O 0-900m



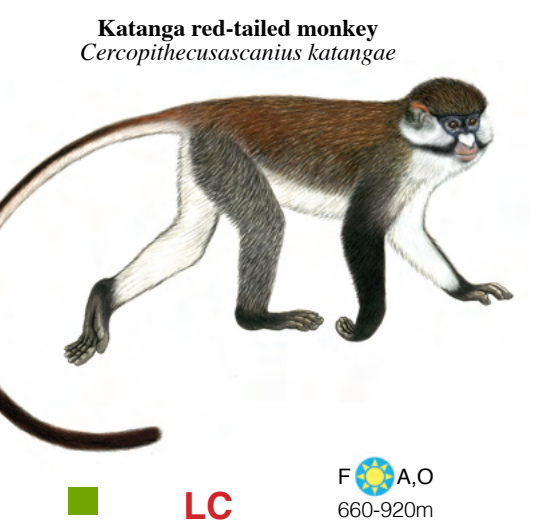
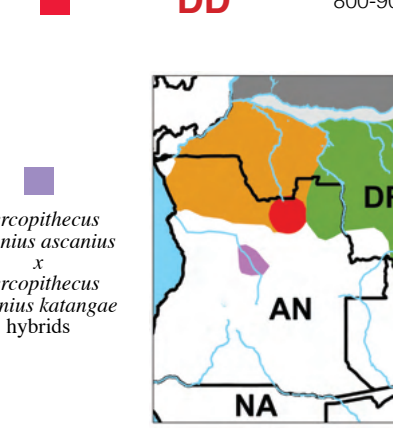
Schmidt's red-tailed monkey
Cercopithecus ascanius schmidti

LC F A, O 775-1000m



Black-nosed red-tailed monkey
Cercopithecus ascanius atrinanus

DD F A, O 800-900m



Katanga red-tailed monkey
Cercopithecus ascanius katangae

LC F A, O 660-920m



Cercopithecus ascanius ascanius & Cercopithecus ascanius katangae hybrids